

KIMYO

1. Fosfin va is gazi aralashmasining o'rtacha molar massasi (g/mol) nechaga teng bo'lishi mumkin?

- A) 29
- B) 27
- C) 35
- D) 18

To'g'ri javob – A.

2. Quyidagi ionlarni elektron konfiguratsiyasiga mos ravishda joylashgan qatorni ko'rsating. a) Si^{4+} ; b) Cl^{-} ; c) Ti^{4+} . 1) $1s^2 2s^2 2p^6 3s^2 3p^6$; 2) $1s^2 2s^2 2p^6$; 3) $1s^2 2s^2 2p^6 3s^2 3p^5$.

- A) a-2; b-1; c-1
- B) a-1; b-3; c-2
- C) a-3; b-1; c-2
- D) a-2; b-3; c-1

To'g'ri javob – A.

3. Noma'lum tuz eritmasi inert elektrodlar yordamida elektroliz qilinganda katodda metall, anodda galogen hosil bo'ldi. Noma'lum tuzni aniqlang. 1) CsI ; 2) $CuCl_2$; 3) $CaBr_2$; 4) $BaBr_2$.

- A) 2
- B) 1
- C) 3
- D) 4

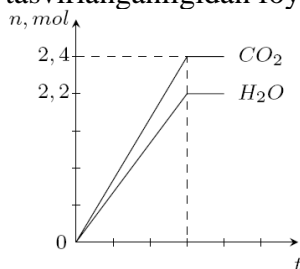
To'g'ri javob – A.

4. 3 litr 1,5 molarli va 1 litr 0,5 molarli sulfat kislota eritmaları aralastirilganda necha foizli eritma ($\rho=1,25$ g/ml) hosil bo'ladi?

- A) 9,8
- B) 4,9
- C) 14,7
- D) 24,5

To'g'ri javob – A.

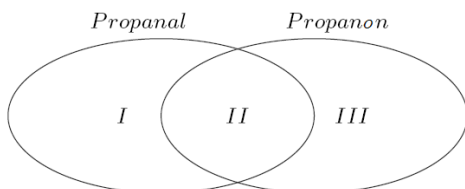
5. 0,2 mol uglevod yonganda hosil bo'lgan mahsulotlarning miqdorlari grafikda tasvirlanganligidan foydalanib, uglevodni toping.



- A) maltoza
- B) glukoza
- C) riboza
- D) fruktoza

To'g'ri javob – A.

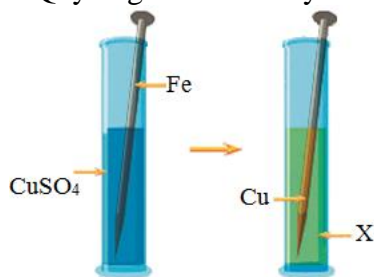
6. Quyidagi diagramma asosida moddalarning xususiy va umumiy xossalarini moslang. a) molekulasida 6 ta vodorod atomi mavjud; b) kumush oksidining ammiakli eritmasi bilan reaksiyaga kirishadi; c) dimetilketon deb ham ataladi; d) bir moli to'liq yonganda 67,2 l (n.sh.) CO_2 ajraladi.



- A) I – b; II – a, d; III-c
 B) I – c ; II – b, c; III-b
 C) I – a; II – b, d; III-c
 D) I – d; II – c, d; III-b

To‘g‘ri javob – A.

7. Quyidagi rasmdan foydalanib X moddasini toping.



- A) temir (II) sulfat
 B) temir (II) xlorid
 C) temir (III) xlorid
 D) temir (III) sulfit

To‘g‘ri javob – A.

8. 60 m^2 yerni fosforli o‘g‘itlash uchun 1420 g ozuqa elementi sarflangan bo‘lsa, shu ozuqa elementi necha gramm kalsiy digidrofosfat tarkibida bo‘ladi?

- A) 2340
 B) 1170
 C) 3510
 D) 1360

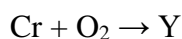
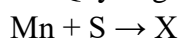
To‘g‘ri javob – A.

9. $\text{Si} \xrightarrow{+\text{Mg}} \text{X} \xrightarrow[-\text{MgCl}_2]{+\text{HCl}} \text{Z} \xrightarrow[-\text{H}_2\text{O}]{+\text{O}_2} \text{Y}$. Ushbu sxemadagi Y moddasini aniqlang.

- A) SiO_2
 B) SiH_4
 C) Mg_2Si
 D) MgCl_2

To‘g‘ri javob – A.

10. Quyidagi reaksiyalardan foydalanib X va Y moddalarini aniqlang.



- A) MnS ; Cr_2O_3
 B) Mn_2SO_3 ; CrO_3
 C) Mn_2S_3 ; SeO_3
 D) CaCl_2 ; MnS

To‘g‘ri javob – A.